

Available 26th October 2022 - One Bedroom
Ground Floor Flat in a Converted School Building

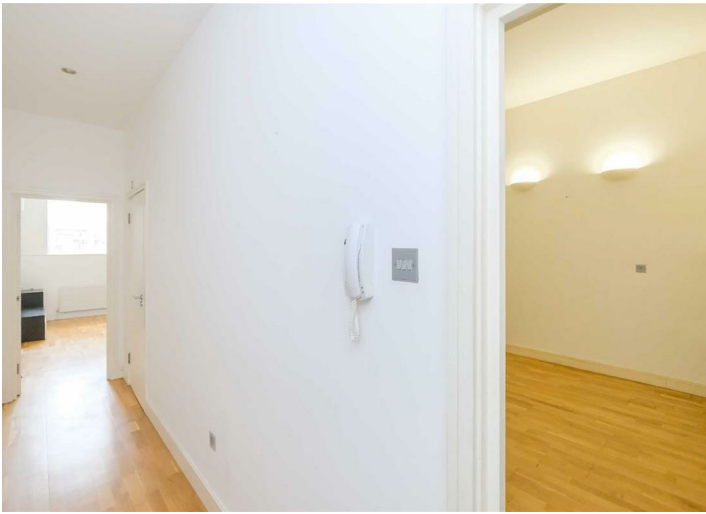
CHURCHILL
estates



Manbey Park Road, Maryland, E15 1EQ
£1,250 Per Calendar Month



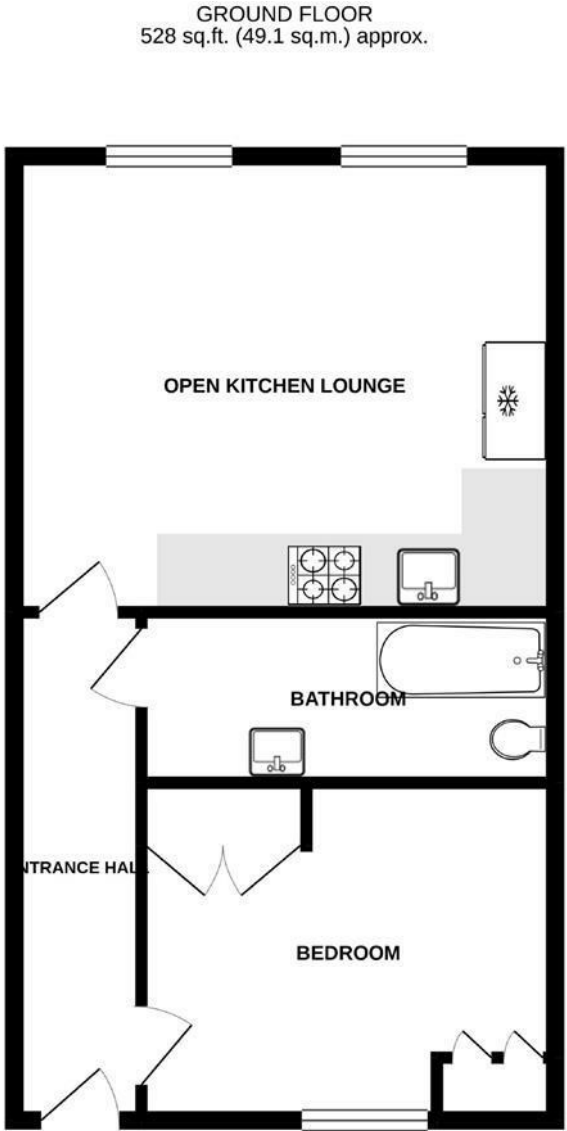
To view call **020 8989 0011**
Email wanstead@churchill-estates.co.uk



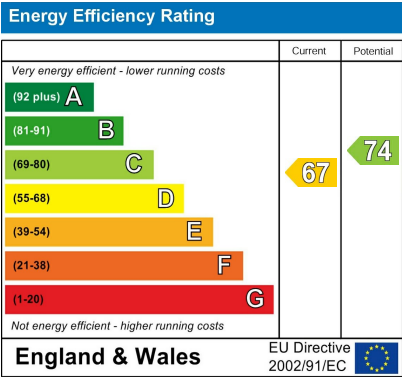
Available 26th October 2022 - Unfurnished - Churchill Estates are delighted to offer this well presented one bedroom apartment in an imposing converted Victorian school building. Located in the heart of Stratford, this apartment is mere moments away from Maryland and Stratford stations, the Westfield shopping centre and the Olympic Park.

The property further benefits from high ceilings, a generous and bright modern lounge area set in an open-plan kitchen that offers an inviting sense of space and luxurious contemporary feel, a large double bedroom with ample storage, and a sizable three piece bathroom.

A property of such high quality is sure to attract a lot of interest so please call our Wanstead Branch to schedule an appointment to avoid disappointment.



TOTAL FLOOR AREA : 528 sq.ft. (49.1 sq.m.) approx.
Whilst every attempt has been made to ensure the accuracy of the floorplan contained here, measurements of doors, windows, rooms and any other items are approximate and no responsibility is taken for any error, omission or mis-statement. This plan is for illustrative purposes only and should be used as such by any prospective purchaser. The services, systems and appliances shown have not been tested and no guarantee as to their operability or efficiency can be given.
Made with Metropix ©2021



Newham Council Band B

EPC Rating D

12 Month Contract

5 Week Deposit £1442.00

The Agent has not tested any apparatus ,equipment, fixtures and fittings or services and so cannot verify that they are in working order or fit for the purpose. A buyer is advised to obtain verification from their solicitor or surveyor.
References to the tenure of a property are based on information supplied by the seller. The agent has not had the sight of the title documents. A buyer is advised to obtain verification from their solicitors.

CHURCHILL
estates

To view call **020 8989 0011**
Email wanstead@churchill-estates.co.uk